

Visualiser cet email dans votre navigateur



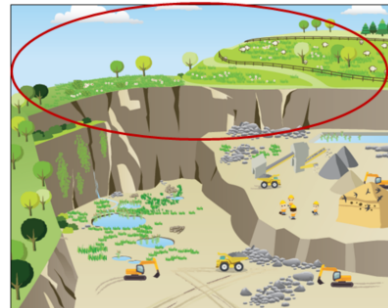
Newsletter #5

Since our last newsletter, the LIFE IN QUARRIES project has begun its second half of its term. Now active on 24 quarries in Wallonia, conservation actions (temporary and permanent nature) are progressing quickly. Some objectives are already largely exceeded at this stage of the project!

	Objective	Executed
1. Dynamic management of <u>temporary ponds</u> ;	120 pcs	341 pcs
2. Management of <u>associated pioneer grasslands</u> ;	12 ha	6,7 ha
3. <u>Creation and refreshment of loose cliffs</u> ;	10x 30m	7 x 30 m
4. Management of <u>dynamic screes</u> ;	5 ha	-
5. Installation of <u>shelters</u> ;	96 pcs	86 pcs
6. <u>Development of vascular plant species</u> ;	8 esp.	5 esp.
7. <u>Amphibian translocation</u> (<i>Bufo calamita</i> , <i>Triturus cristatus</i>)	2 x 4 pop.	En cours
8. <u>Breeding of yellow bellied toad</u> (<i>Bombina variegata</i>)	1 pop.	En cours



	Objectives	Executed
1. <u>Creation</u> and management of <u>permanent ponds</u>	24 pcs	59 pcs
2. Creation of <u>soft slopes</u> for <u>reedbeds</u> installation	400 m	60 m
3. Installation of <u>stern platforms</u>	16 pcs	4 pcs
4. Restauration and mangement of <u>mowed grassland</u>	10 ha	5,8 ha
5. Restauration and mangement of <u>grazed grassland</u>	50 ha	2,66 ha
6. <u>Securing chiropters galleries</u>	4 pcs	1 pcs
7. Restauration of <u>scree through last blasting</u>	200 m	0 m
8. <u>Creation of linear scree</u>	8000 m	1757 m



Visit of the European Commission (EASME)

PNPE) met with representatives of the European Commission (EASME and NEEMO). This meeting allowed us to exchange our ideas to improve the actions carried out within the framework of the LIFE project.

A field trip was also organized to show various actions in the Bierghes quarry. Despite the ambient heat, many species have been observed: Natterjack toad, Peregrine falcon, as well as many dragonflies and rare plants. What will motivate us for the rest of the project!



Start of the reintroduction campaign of the Natterjack toad

After long months of discussions, administrative procedures, habitat preparation, source population estimation and pathogen analyzes, the first Natterjack toad tadpoles (*Bufo calamita*) were transferred to a new host quarry. The objective is to create at least **4 new populations** in quarries in the Walloon region.



The Natterjack toad is a species in regression (species in Appendix IV of Directive CE / 92/43 and Appendix II of the Bern Convention) with precarious populations increasingly isolated from each other (habitat fragmentation combined with the disappearance of natural habitats favourable to its reproduction). The species is classified as endangered in the Walloon Red List (Jacob, 2007) and is the subject of a Regional Action Plan (Laudelout, 2016).

Indeed, this amphibian is originally dependent on disturbed and pioneering environments (open spaces, plains, alluvial plains ...) where it finds non-vegetated temporary pools to reproduce and terrestrial habitats with sparse vegetation to hunt. He needs enough shelters to hide (burrows, scree, ...). Active quarries often offer the conditions required to ensure optimal reproductive success: surface areas often covering tens of hectares,

Training modules towards biodiversity management

After a first module (may/june 2017) for **operations / environment managers**, a second module was organized on 15/12/2017 for **top managers** after a Fediex board meeting. A third training module has organized since January 2018 onwards to raise awareness of **on-site quarry workers** with specific practical training sessions in all participating quarries. These training modules are part of a global LIFE project aiming to promote **autonomous** management of biodiversity by professionals of the sector.



For example, a training in the recognition of our reptilian and amphibian species was given to the staff of the sites participating in the LIFE project. During a training session in the Hermalle quarry, more than 5 species of amphibians and 3 species of reptiles have been observed including emblematic species such as the common midwife toad (*Alytes obstetricans*), the Northern crested newt (*Triturus cristatus*) or the smooth snake (*Coronella austriaca*). It's show again the importance of quarries in the conservation of rare species.



Thank you for your interest, for any questions or additional information, do not hesitate to contact us or follow us on our website and social networks.



Subscribe

Past Issues

Translate ▼

[unsubscribe from this list](#)

This email was sent to <<Email Address>>

[why did I get this?](#) [unsubscribe from this list](#) [update subscription preferences](#)

Life in Quarries · Rue Edouard Belin, 7 · Mont-Saint-Guibert 1345 · Belgium

